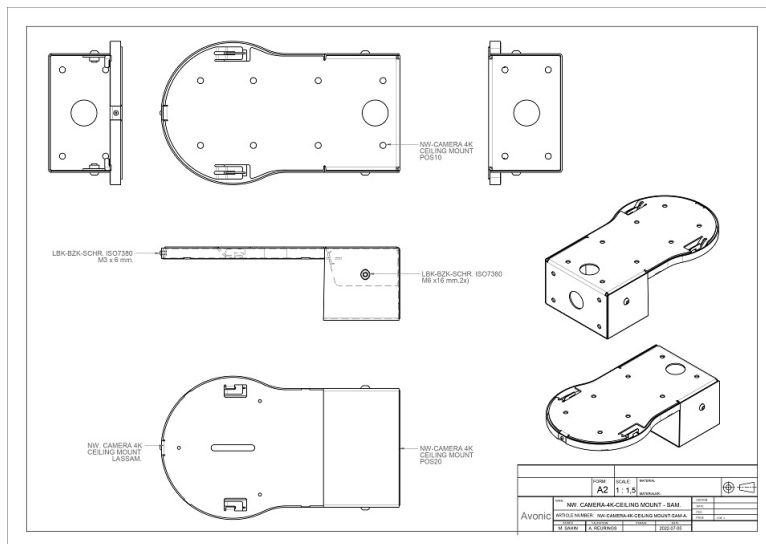


AV-MT300 WALL MOUNT



Avonic Wall and Ceiling Mount

The Avonic MT 300 is a solid wall- and ceiling mount suitable for the support of the Avonic CM93 4K PTZ camera. Its discrete design matches the silent operation of the camera. The MT300 is a beautiful extension that not only ensures great looking safe support of the CM93 4K camera but also allows for all cables to be hidden inside the rear cover. The MT300 has several mounting holes at the bottom and at its back that serve a dual purpose; it ensures optimal compatibility with standard VESA mounts and it makes finding a suitable wall or ceiling location to mount the MT300 easy. Accessories include a heavy duty 30mm steel ring specifically designed to mount the MT300 on a truss clamp. For mobile applications the MT300 can be mounted on a tripod. The MT300 is available in black or white to match the colour of Avonic PTZ cameras.



AV-MT300-W



AV-MT300-B

SPECIFICATIONS

Color	Black, White	Black	AV-MT300-B
Dimensions product	153 x 83 x 274 mm	White	AV-MT300-W
Weight	1.55 kg		
Included	AV-MT250 Black or white 1 x 1/4"-20 UNC camera screw 5 x M3*6mm black screw 2 x black Allen bolt m6*1.0 (to hold steel back cover) 1 x black 30mm cover cap		