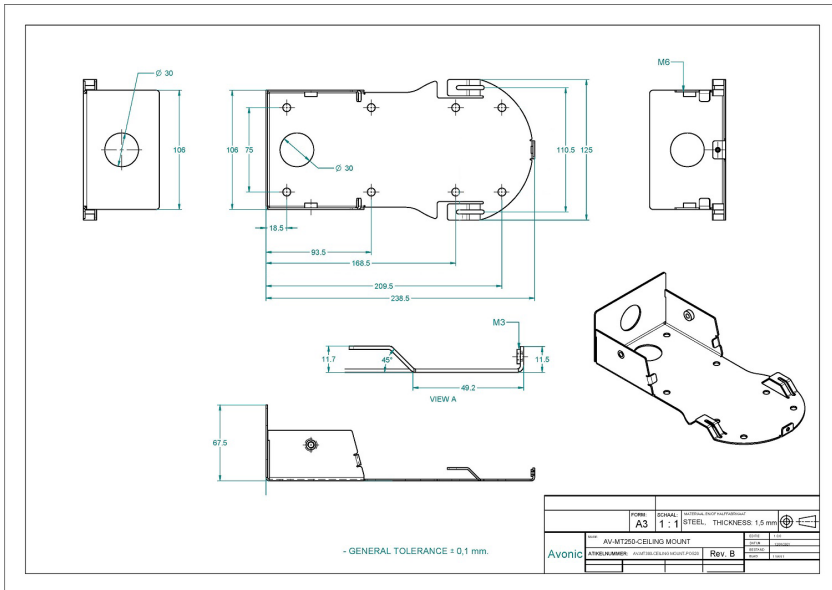




AV-MT250 CEILING MOUNT

Avonic Ceiling Mount with cover for Avonic cameras

The Avonic MT250 is a solid ceiling mount suitable for the CM40 and CM70 series. Its discrete design matches the silent operation of Avonic PTZ cameras. The MT250 is equipped with two VESA75 mounting possibilities. The double VESA75 holes serve a dual purpose; it ensures optimal compatibility with standard VESA mounts and it makes finding a suitable ceiling location to mount the MT250 easy. When mounted to the ceiling, the clever MT250 design allows to have your hands free for easy installation of the camera.



AV-MT250-W



AV-MT250-B

SPECIFICATIONS

Color	Black, White	Black	AV-MT250-B
Dimensions product	138 x 69 X 240 mm	White	AV-MT250-W
Weight	1,1 kg		
Included	AV-MT250 Black or white 1 x 1/4"-20 UNC camera screw 5 x M3*6mm black screw 2 x black Allen bolt m6*1.0 (to hold steel back cover) 1 x black 30mm cover cap		