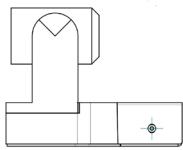


AV-MT220 WALL MOUNT

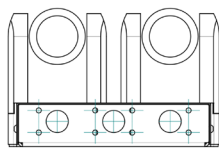


Double Wall Mount for Avonic Cameras

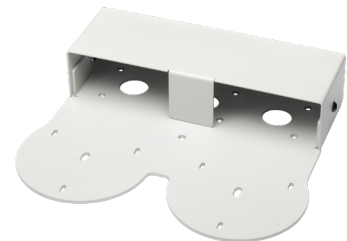
Wall mount for two CM30, CM70 or CM80 series PTZ cameras. The Avonic MT220 Double Wall Mount is a solid wall mount suitable for the support of two CM30, CM70 or CM80 series PTZ cameras. Its discrete design matches the silent operation of Avonic PTZ cameras. The double wall mount is a beautiful extension that not only ensures great and safe support of the PTZ cameras but also allows for all the cables to be hidden inside the mount. Accessories include a heavy-duty 30mm steel ring specifically designed to mount the MT-200 on a truss clamp. For mobile applications the MT220 can be mounted in a flight case or installed on a tripod. Available in black and white to match our PTZ cameras.



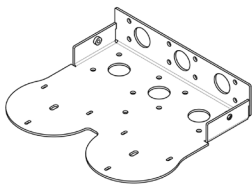
Side view



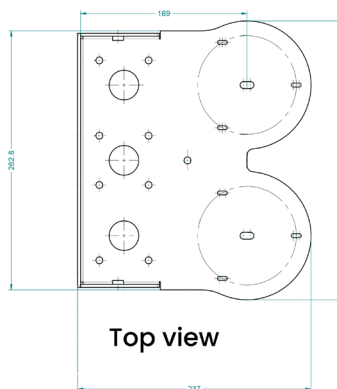
Rear view



AV-MT220-W



3D view



Top view



AV-MT220-B

SPECIFICATIONS

Color	Black, White	Black	AV-MT220-B
Dimensions product	237 x 57 x 26.28 mm	White	AV-MT220-W
Weight	2.1 kg		
Included	MT220 Double Wall Mount, 3x Black 30MM Cover Cap, 1x 30MM		