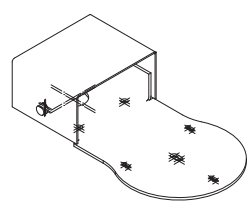


# AV-MT200 WALL MOUNT

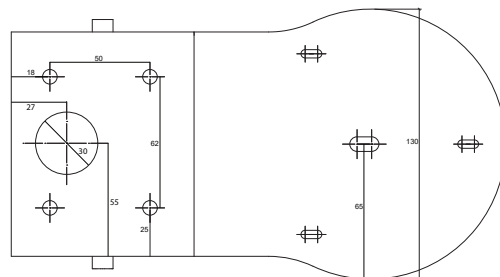


## Avonic Wall Mount Black/White for CM30, CM70 & CM80 series

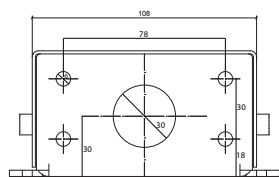
The Avonic MT200 is a solid wall mount suitable for the CM30, CM70 or CM80 series. Its discrete design matches the silent operation of Avonic PTZ cameras. The wall mount is a beautiful extension that not only ensures great and safe support of a PTZ camera but also allows for all the cables to be hidden inside the mount. For mobile applications the MT200 can be mounted in a flight case or installed on a tripod. Accessories include a heavy-duty 30mm steel ring specifically designed to mount the MT200 on a truss clamp. Available in black and white to match our PTZ cameras..



3D View



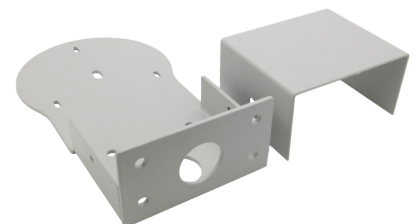
Top view



Rear View



Side View



AV-MT200-W



AV-MT200-B

## SPECIFICATIONS

<b>Color</b>	Black, White	<b>Black</b>	AV-MT200-B
<b>Dimensions product</b>	237 x 60 x 130 mm	<b>White</b>	AV-MT200-W
<b>Weight</b>	1.060 kg		
<b>Included</b>	MT200 Wall Mount, 1x Black 30MM Cover Cap, 1x 30MM Steel Ring, 1x 1/4"- UNC Pozidrive screw to fasten camera, M6*10mm 2x Allen Bolt screw, M3*6mm DIN9785 5x Pozidrive security screw		