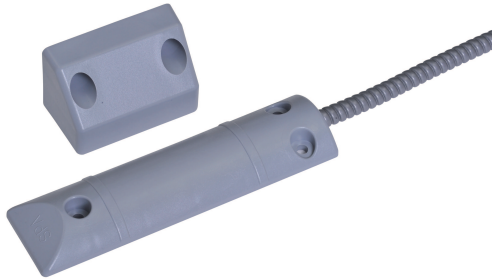


## ISP-RSC3-110S LSN roller shutter contact, EN-G3



- ▶ LSN shutter door contact for monitoring shutter, sliding, and garage doors
- ▶ Tamper surveillance
- ▶ High level of mechanical strength
- ▶ Parallel mounting
- ▶ VdS class C/EN 50131-2-6 Grade 3

The LSN shutter door contact is used to monitor shutter, sliding, and garage doors.

The contact is equipped with tamper surveillance. If an external magnet is in close proximity, the tamper switch is activated, which generates a tamper alarm. The shutter door contact consists of a sealed magnetic switch and a magnet in a plastic housing. The components are surface-mounted parallel to each other. The magnetic switch is mounted on the floor.

### Regulatory information

Region	Regulatory compliance/quality marks	
Europe	CE	[ISP-MCLS3-U110S, ISP-MCOLS3-U110S, ISP-RSC2-110S, ISP-RSC3-S110]
	EN50131	G113048 [ISP-RSC3-110S]
Russia	GOST	TC N RU Д-НЛ.МН09.В.00334 EAC
Poland	TECHOM	08-16-o [ISP-RSC3-110S]
Germany	VdS	G 113048 ISP-RSC3-110S

### Installation/configuration notes

#### Installation information

- For doors < 1.5 m, one shutter door contact is required. For doors > 1.5 m, use two shutter door contacts. Take note of the permissible installation tolerances.

- The connection cable is protected over a length of 1 m by a metal tube.
- The magnetic switch is installed at ground level (requires a flat surface). The switch will not be damaged if driven over by vehicles with rubber tires.
- Only anti-magnetic screws may be used for installation.
- The magnetic switch must not be used as a door stopper.

#### Connecting LSN contacts

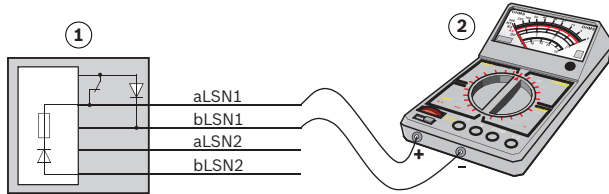
- Each LSN contact is a physical LSN element (1 out of 127 possible per loop).
- The length of LSN contact connection cables must be included when planning the total line length of the LSN loop, as the LSN technology is integrated in these contacts.
- Passive elements for connecting the connection cables to the installation cable must be positioned as close as possible to the LSN contacts, as a 1-m connection cable with 2-m LSN cable length is included in the calculation of the LSN cable length (LSN is fed into the contacts and back out again).
- Connector boxes (optional) are classified as installation material.

#### LSN (Local Security Network)

In the event of wire breakage or short-circuits, all LSN elements in the LSN loop continue to be monitored. In this case, the system automatically creates two stub lines that continue to monitor from both sides up to the location of the fault.

### Testing LSN contacts

- Reed switch and microswitch functions can be checked before installation using a high-Ohm multimeter or continuity checker (for diode paths).
- The resistance values are approximate values; a large change in resistance is significant.



- |   |   |
|---|---|
| 1 | Contact us  |
| 2 | High-ohm multimeter<br>- Contact open: approx. 3 MOhm<br>- Contact closed: approx. 1 MOhm |

Only the intrusion contact can be checked in this way. The tamper switch can be checked in conjunction with the LSN control panel or with the LSN testing device (software version 3.x onward).

### Parts included

Quantity	Component
1	Shutter door contact with 4-m connection cable and magnet incl. installation materials and metal tube

### Technical specifications

LSN operating voltage	15 V to 33 V
Reed contact type	Normally open contact
Switch tolerance	$\geq 10^7$
Installation distance	$\geq 25$ mm
Magnetic material	AlNiCo 500
Temperature range	-25 °C to +70 °C
Connection cable	LiY(St)Y 4 x 0.22 mm <sup>2</sup> , white
Cable length	4 m

#### Represented by:

**Europe, Middle East, Africa:**  
Bosch Security Systems B.V.  
P.O. Box 80002  
5600 JB Eindhoven, The Netherlands  
Phone: + 31 40 2577 284  
[www.boschsecurity.com/xc/en/contact/](http://www.boschsecurity.com/xc/en/contact/)  
[www.boschsecurity.com](http://www.boschsecurity.com)

**Germany:**  
Bosch Sicherheitssysteme GmbH  
Robert-Bosch-Ring 5  
85630 Grasbrunn  
Tel.: +49 (0)89 6290 0  
Fax: +49 (0)89 6290 1020  
[de.securitysystems@bosch.com](mailto:de.securitysystems@bosch.com)  
[www.boschsecurity.com](http://www.boschsecurity.com)

**North America:**  
Bosch Security Systems, LLC  
130 Perinton Parkway  
Fairport, New York, 14450, USA  
Phone: +1 800 289 0096  
Fax: +1 585 223 9180  
[onlinehelp@us.bosch.com](mailto:onlinehelp@us.bosch.com)  
[www.boschsecurity.com](http://www.boschsecurity.com)

**Asia-Pacific:**  
Robert Bosch (SEA) Pte Ltd, Security Systems  
11 Bishan Street 21  
Singapore 573943  
Phone: +65 6571 2808  
Fax: +65 6571 2699  
[www.boschsecurity.com/xc/en/contact/](http://www.boschsecurity.com/xc/en/contact/)  
[www.boschsecurity.com](http://www.boschsecurity.com)

Cable protection tube	Flexible metal tube, diameter: 6/9 mm, covered in plastic, length: 1 m, color: gray
Housing material/color	Plastic/gray
Weight (with cable and magnet)	Approx. 285 g
Switch dimension	150 x 40 x 13.5 mm
Magnet dimension	65 x 42 x 35 mm
Protection category	IP67
Environmental class VdS/EN	III/III A

### Ordering information

#### ISP-RSC3-110S LSN roller shutter contact, EN-G3

For monitoring shutter, sliding, and garage doors, tamper surveillance

Order number **ISP-RSC3-110S** | **F.01U.275.642**